

Attachmate INFOConnect Enterprise Edition for Airlines Print and Transaction Router (PTR)

Industry-Proven Printing for Multidevice Environments

Attachmate® INFOConnect® Enterprise Edition for Airlines Print and Transaction Router (PTR) is flexible print delivery software—designed for airline multidevice networks—that complements Attachmate’s INFOConnect Enterprise Edition terminal emulation. PTR supports not only shared printers and host devices, but also intelligent devices such as card readers, specialized printers used for ticket generation, and point of sale terminals used to print receipts.

With PTR, your PC delivers functionality previously provided only on specialized terminals. In addition, PTR prints from multiple hosts, independent of a terminal emulator.

Need Enhanced Functionality? Get PTRPlus or PTRServer.

INFOConnect Enterprise Edition for Airlines Print and Transaction Router Plus (PTRPlus) and INFOConnect Enterprise Edition for Airlines Print and Transaction Router Server (PTRServer) are now available.

PTRPlus and PTRServer provide the same essential capabilities as PTR *plus* more. PTRPlus is CUPPS certified for global release, and PTRServer supports additional print routes and COM ports.

Industrial-strength connectivity for airlines

Attachmate developed PTR to provide a printing solution for complex airline and travel industry application environments. Multihost access is often the rule in airline network environments, and airline and other travel industry workstations communicate via a variety of protocols. Host applications send code to peripherals to print items such as boarding passes,

luggage tags, and tickets, on sophisticated, bi-directional printing devices. PTR can be used to print data from virtually any source to any peripheral device.

IP network flexibility

Over the past few years, the airline industry has been migrating to high-speed IP networks, replacing terminals and PCs attached to gateways, and trying to upgrade from slow links. Airlines making the migration face the challenge of accessing legacy applications with custom processes on different platforms. PTR can utilize IP, including other industry standard transports like MATIP, to provide print message routing over dissimilar networks. It can connect multiple hosts with multiple input and output devices, regardless of communication protocol—making it a solution of choice before and after the migration.

Bi-directional printing—the key to PTR print delivery and messaging

PTR shares and controls bi-directional printers connected to virtually any host. With custom print drivers and host filters PTR can direct host print jobs to locally attached devices or redirect host print jobs to various print queues. And because PTR supports bi-directional messaging on ATB2 (Automated Ticketing and Boarding Pass system) devices and industry-standard ticket and boarding pass printers, it sends an acknowledgement back to the host before allowing another job to start.

KEY BENEFITS

- NEW** Compatible with Microsoft Windows 7
 - Certified for Microsoft Windows Vista
 - Microsoft Windows XP Compliant
 - Bi-directional print delivery messaging and printer support for airlines
 - Support for IPv6
 - Certified to work with CUTE vendors, including ARINC, RESA, SITA, and ULTRA
- NEW** Certified for CUPPS Platform (PTRPlus only)
 - Support for 100 print routes (64 routes without PTRServer)
 - PTR accepts input from:
 - Bar code scanners
 - Passport readers
 - Magnetic stripe readers
 - PTR generates output to:
 - ATB2 ticket printers
 - Baggage tag printers
 - Miscellaneous line printers
 - PTR supports the following print queues:
 - COM ports 1–15 (PTR and PTRServer)*
 - NEW** COM ports 16-64 (PTRServer only)*
 - LPT ports 1–4
 - Spooled or redirected

Related Products

- INFOConnect Enterprise Edition for Airlines
- INFOConnect Airlines Gateway

* On Windows 2000 or higher.

Flexible, multihost printing

No other product on the market today supports as many host types and peripheral devices as PTR. Without PTR, a printer used for Unisys® UTS print jobs cannot receive print jobs from other types of hosts such as TPF or IBM. With PTR, multiple host sessions print to the same printer without having to reconfigure. PTR handles the nuances of multiple print jobs and host responses.

A true queue management system

PTR allows data to be manipulated and distributed. Because not all data requires printing, PTR manipulates and distributes data in print queues based on output options and filters. It serves as a router for peripherals used by

distributed applications on different hosts and also allows for sharing peripherals, in some situations.

Confirmed print delivery

In the airlines industry, you need to understand the print status of passenger documents. And with PTR, that status is communicated to the host for each print job. If a printer error occurs, PTR returns an error message so that the problem can be resolved and the host can send the print job again. Once a print job is complete, PTR sends an acknowledgement back to the host. As soon as the host receives the print confirmation, PTR unlocks the queue status and allows the next job to be processed.

ATTACHMATE CUSTOMER PROGRAMS

Maintenance and Technical Support Subscription Program

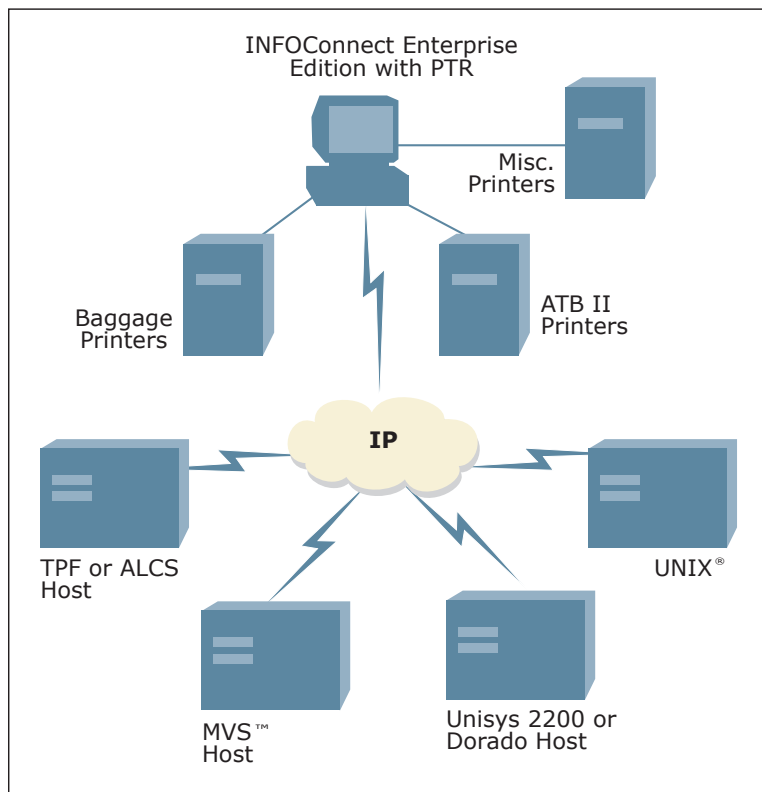
This program provides smooth operation for your INFOConnect installation and protects your investment by automatically providing you with the latest software updates.

Airline Elite Support

This program provides round-the-clock telephone support from a professional who understands your environment and business.

Custom Engineering Solutions

Attachmate can customize installation and configuration for individual applications, build host filters for nonstandard host protocols or modified implementations, and create custom libraries for use with unique and specific hardware or communication protocols. With over two decades of experience working with airline and travel organizations, Attachmate consistently delivers the right solutions to meet the unique needs of the industry.



Bi-directional printing is the key to PTR's trusted print delivery. Here the print message goes to the various printers on the network, and an acknowledgment is sent back to the host when a print job is completed.

Print route components

A print route consists of three components: the host session, host filters, and a print session. PTR obtains data from the host session, manipulates the data based on filtering instructions, and then passes that data to the appropriate print session. These user-defined routes provide complete control over where data is sent and how it will be used.

The PTR runtime module resides on Windows PCs or print servers and silently runs in the background. It is designed for easy installation and minimal configuration. Simply indicate the host connection and the destination output device—PTR does the rest. The host filter interprets print files originating on the host, and the filter converts the information into a data stream appropriate for the output device. For example, you can write an application to communicate to a PTR-controlled device via the PTRUAPI.

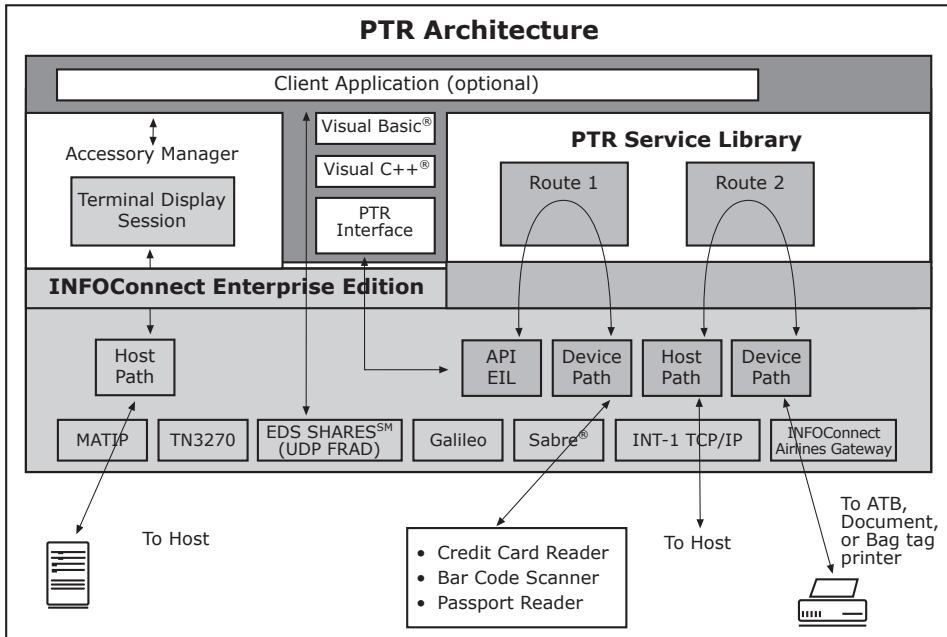
Because PTR is a layered architecture, it can handle devices in different environments—while keeping the application layer unchanged.

PTR host session. Host sessions are simple to configure: Simply supply the host with a printer address and the associated physical address of the workstation where the printer device resides. The PTR host session then transports data from the server to the specified printer address.

Host filters. Host filters are called to manipulate the data stream when data or events are available. Install different host filters to support any host connection and any host application. Some applications may require special handling and changes to the supplied host filters. Filter modifications can be made using the PTR Developer's Kit (PDK).

ADDITIONAL PTR FEATURES

- Runs as a service under Windows:
 - PTR can be set to automatically load and run as a service under Windows
 - Reduces the need for operator intervention
- ATB2 compliant:
 - Fully tested for compliance with the Automated Ticket and Boarding Pass system (ATB2)
 - Control of bi-directional printing devices supports unique communication protocols that formerly kept the airlines tied to traditional terminals
- 2-D barcodes:
 - 2-D barcode print capabilities



PTR translation tables

There may be times when it is necessary to replace specific characters, such as special formatting commands from a custom application, so the peripheral can process the data. Make simple changes to the data stream quickly and easily without recoding the host filters or changing the mainframe application. Easy-to-use translation tables are provided for on-the-fly conversion.

About Attachmate

Attachmate delivers advanced software for terminal emulation, legacy modernization, managed file transfer, and enterprise fraud management. With our technologies, more than 65,000 businesses worldwide are putting their IT assets to work in new and meaningful ways. www.attachmate.com



Corporate Headquarters
1500 Dexter Avenue North
Seattle, Washington 98109
TEL 206 217 7500
800 872 2829
FAX 206 217 7515

EMEA Headquarters
The Netherlands
TEL +31 172 50 55 55
FAX +31 172 50 55 51

Asia Pacific Headquarters
Australia
TEL +61 3 9825 2300
FAX +61 3 9825 2399

Latin America Headquarters
Mexico
TEL +52 55 9178 4970
FAX +52 55 5540 4886

WEB attachmate.com
E-MAIL info@attachmate.com

For regional office information, visit www.attachmate.com.

TECHNICAL SPECIFICATIONS

Available enterprise system support:

- Galileo/Apollo Travel Services
- Sabre
- EDS Shares
- Worldspan
- Amadeus
- MATIP hosts
- Attachmate INFOConnect Airlines Gateway

Host connectivity options:

- TCP path—used for an LPD connection on a Windows print server
- 2200 protocols—used for all data from Unisys 2200 and Dorado systems over TCP
- ALC transports—used to support ALC terminals to TPF hosts

Output options:

- Printer port or Print Manager
- Disk file
- User-written Service Library filter
- User-written accessory
- Third party print facility

Supported peripheral connections:

- Serial ports
 - COM1 through COM64 (COM16 through COM64 with PTR Server only)
- Parallel ports—LPT1 through LPT4
- Microsoft Windows print spooler/Windows defined printer

Print routes:

- NEW** 100 print routes (64 routes without PTRServer)

* On Windows 2000 or higher.